

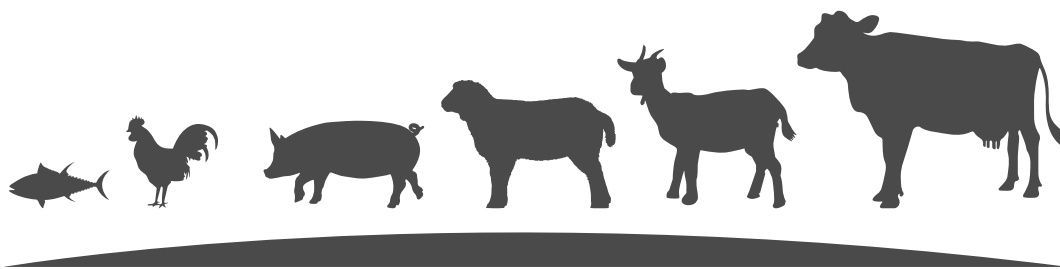


D2DX™ IMMUNITY TEST

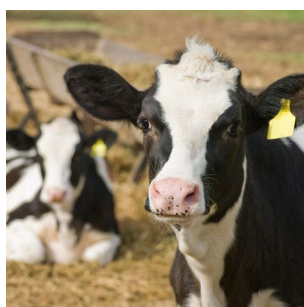
One-Minute Blood Test for Animal Immune Health Testing



D2DX™ IMMUNITY TEST

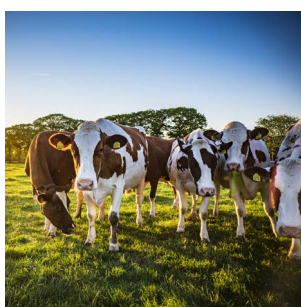


BETTER IMMUNE HEALTH, LESS DISEASES AND BETTER PRODUCTIVITY



Dairy & Beef Calves

passive immunity transfer, infection/disease risk and status, stress, nutrition management



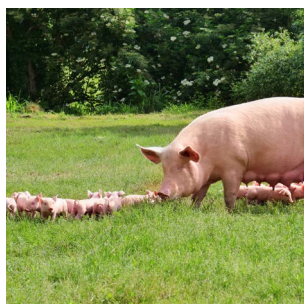
Dairy & Beef Cows

health status during periparturient period, disease risk, fertility, nutrition management



Sheep & Goats

infection/disease risk and status during periparturient period, selective breeding, nutrition management



Pigs

infection/disease risk and status, passive immunity transfer, weaning stress, nutrition management



Aqua

general health and wellbeing, infection/disease risk and status, nutrition management



Poultry

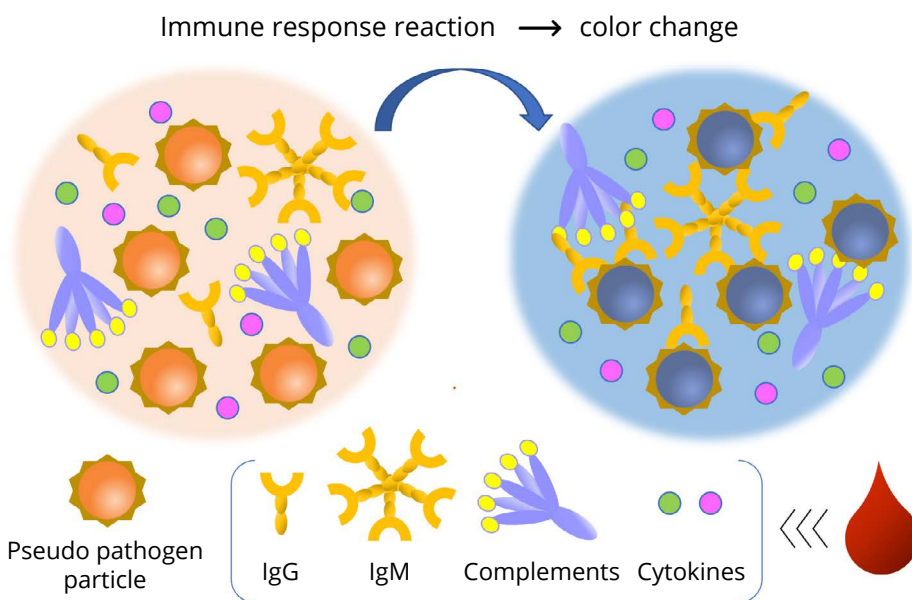
inflammation/infection/disease status and risk, immunosuppression, nutrition management

D2Dx™ IMMUNITY TEST

The Science Behind The Technology

D2Dx™ immunity test is a rapid blood test for animal immune health testing. The test uses a pseudo pathogen particle reagent to probe the immune response capability of a blood sample from the animal. Upon mixing the reagent with a blood serum or plasma sample, the humoral immune molecules in the blood including IgG, IgM, complements, cytokines and other relevant molecules will react with the pseudo pathogen particle, mimicking closely the immune reactions that occur *in vivo*.

These immune reactions will lead to a color change of the assay solution, which is measured by a colorimeter reader, CT-100. Depending on the immune status and activity of the animal, the degree of color change varies, and the measured color change is reported directly as a quantitative immunity score. D2Dx™ immunity test can be used to monitor and evaluate the immune health of multiple animal species (cattle, sheep, goats, poultry, swine, fish, cats, dogs) and for animals at all growth stages, from newborn to weaning, puberty and adulthood. Farmers and veterinarians can use the test results to make informed management and treatment decisions.



On-Farm Testing

Animal-side testing

Rapid

Results within 1 min

Affordable

Low-cost blood test

Accessible

For any size farm/ herd



1. Draw animal blood



2. Run D2Dx™ test

Cow ID	D2Dx™ test score
001	0.045
002	0.052
003	0.038
004	0.029
005	0.015
006	0.066

3. Read test results



4. Make decisions

▶ Watch here on how to perform D2Dx™ Immunity Test: <https://www.youtube.com/watch?v=LaT2v4fdpVc>

PRODUCTS

CT-100

CT-100 is the device used to perform the D2Dx™ immunity test. One-time purchase item.

D2Dx-kt-200

Test kit that contains the reagents and consumables to perform 200 tests.

D2Dx-kt-500

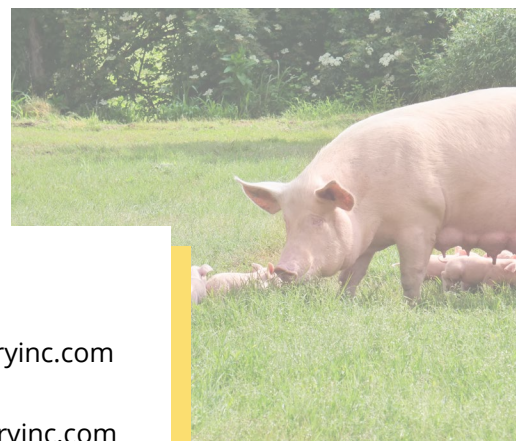
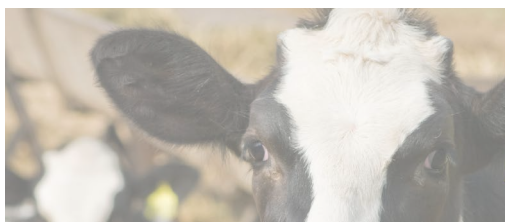
Test kit that contains the reagents and consumables to perform 500 tests.

D2Dx-kt-XXXX

For larger quantities, please contact us to request quote.

D2Dx-SWN-XXX

Test kit for swine only. Please contact us to request quote.



**CONTACT
FOR MORE
INFORMATION**



www.nanodiscoveryinc.com



info@nanodiscoveryinc.com



(407) 698-3479



1060 Woodcock Road Suite
131 Orlando, FL 32803